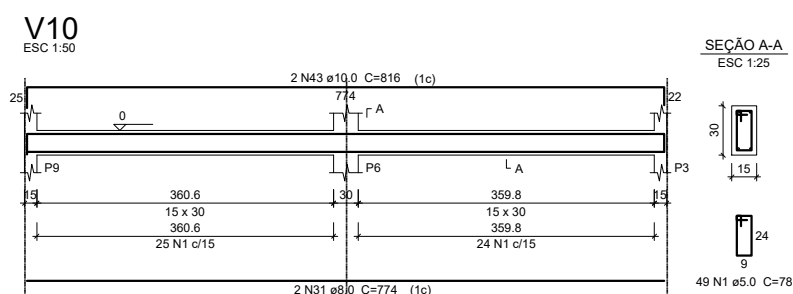
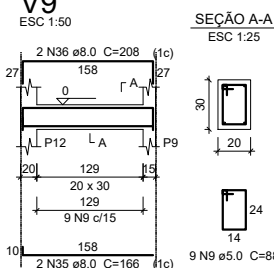
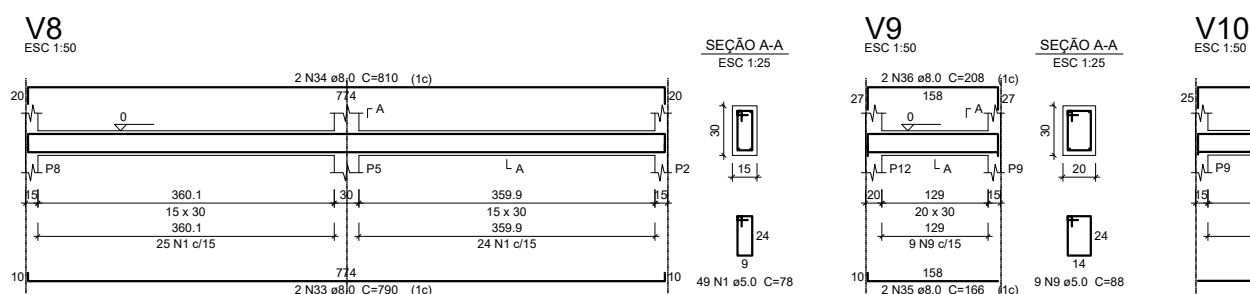
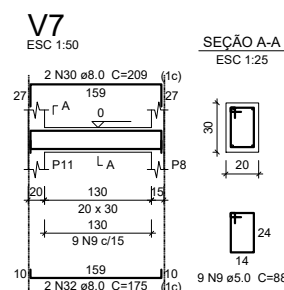
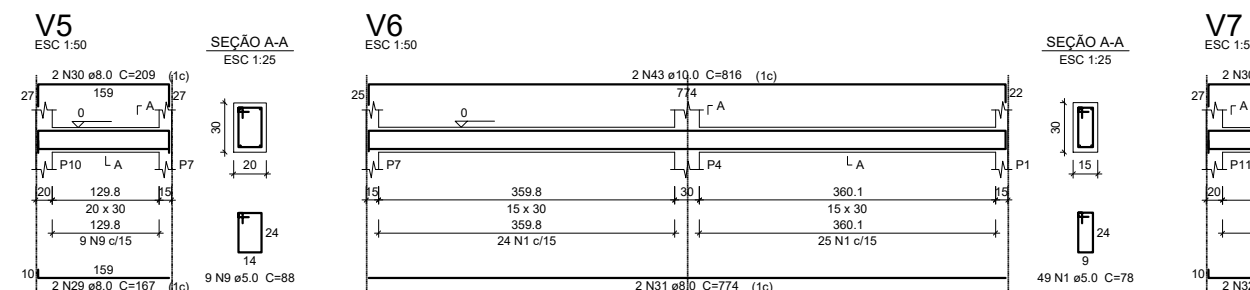
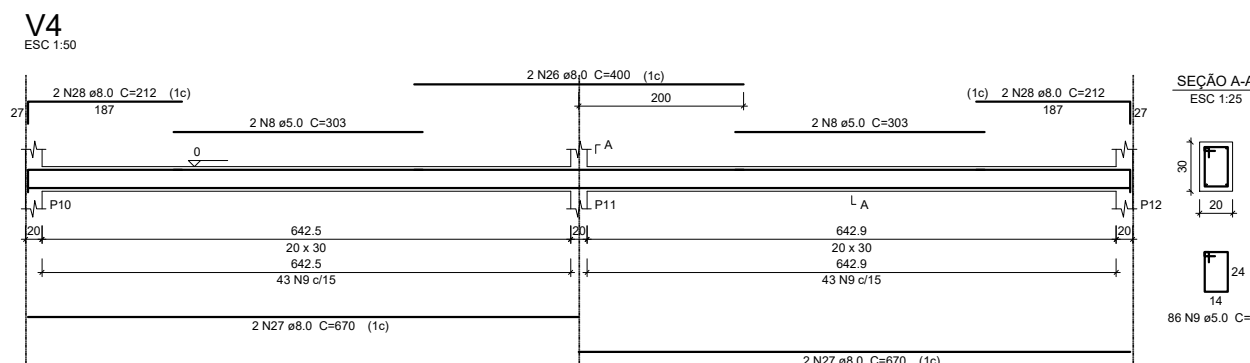
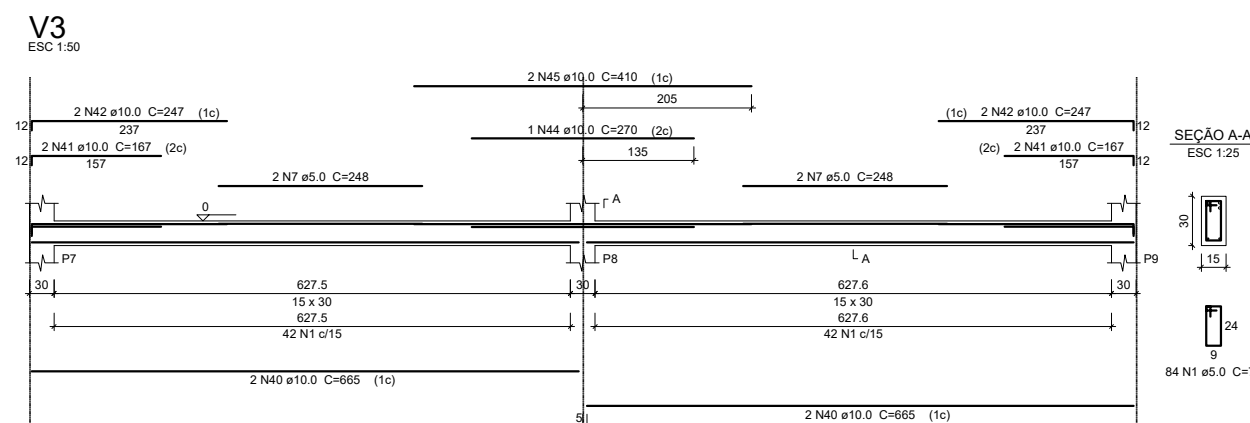
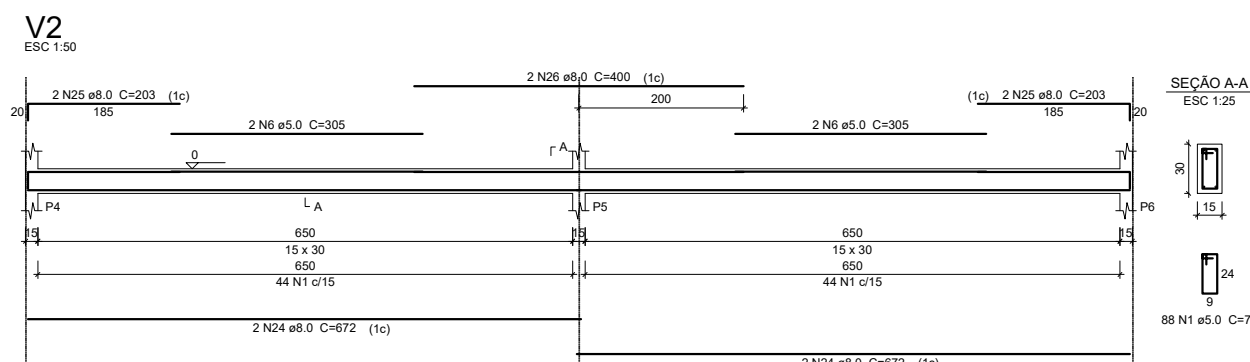


Relação do aço						
		S5		46S7		
		V1		V2		
3xS10		V4		V5		
V3		V7				
V6		V8				
V9		V10				
AÇO	N	DIAM (mm)	QUANT	C/UNIT (cm)	C TOTAL (cm)	
CA80	1	5.0	484	78	37752	
	2	5.0	16	24	384	
	3	5.0	27	68	1836	
	4	5.0	2	272	544	
	5	5.0	273	273	566	
	6	5.0	4	305	1220	
	7	5.0	4	248	992	
	8	5.0	4	303	1212	
	9	5.0	113	88	9994	
	10	6.3	98	95	9340	
	11	6.3	636	110	6996	
	12	6.3	9	85	765	
	13	8.0	100	100	1000	
	14	8.0	56	124	6944	
CA50	15	8.0	44	139	6116	
	16	8.0	1	264	264	
	17	8.0	2	687	1378	
	18	8.0	1	288	288	
	19	8.0	6	165	990	
	20	8.0	2	105	210	
	21	8.0	1	162	168	
	22	8.0	1	165	168	
	23	8.0	4	225	900	
	24	8.0	4	672	2688	
	25	8.0	4	203	812	
	26	8.0	4	400	1600	
	27	8.0	4	670	2680	
	28	8.0	4	212	848	
	29	8.0	2	167	334	
	30	8.0	4	209	836	
	31	8.0	2	174	348	
	32	8.0	2	175	350	
	33	8.0	2	170	340	
	34	8.0	2	160	320	
	35	8.0	2	166	332	
	36	8.0	2	208	416	
	37	10.0	56	VAR	VAR	
	38	10.0	2	480	960	
	39	10.0	4	665	2660	
	40	10.0	4	167	668	
	41	10.0	4	247	988	
	42	10.0	4	186	744	
	43	10.0	4	186	744	
	44	10.0	1	270	270	
	45	10.0	2	410	820	

AÇO	DIAM (mm)	C.TOTAL (m)	PESO + 10 % (kg)
CA50	6.3	147.4	39.7
	8.0	355.8	154.4
	10.0	185.5	130.0
CA60	5.0	549.1	93.1
PESO TOTAL (kg)			
CA50	324		
CA60	93.1		

Volume de concreto (C-25) = 7.28 m³
Área de forma = 83.22 m²



Tipo da obra: INSTITUCIONAL		Modalidade:	INFRA-ESTRUTURA
Obra:	SALAS LEITURA/INFORMÁTICA - ESCOLA XV DE OUTUBRO		
	PREFEITURA MUNICIPAL DE CAMPOS DE JÚLIO CGC: 01.614.516/0001-99		
	AVENIDA VOLMIR TABORDA CÂMARA, CENTRO CAMPOS DE JÚLIO-MT CEP: 78307-000		
Autor do Projeto:	Luiz Carlos C. Oliveira Eng. Civil - CREA 1202470122		
Responsável Técnico p/obra:			
<h1>PROJETO SAPATAS/BALDRAMES</h1>			
DESENHO: Luiz Carlos	DATA: 08/10/2021		ESCALA: 1:50